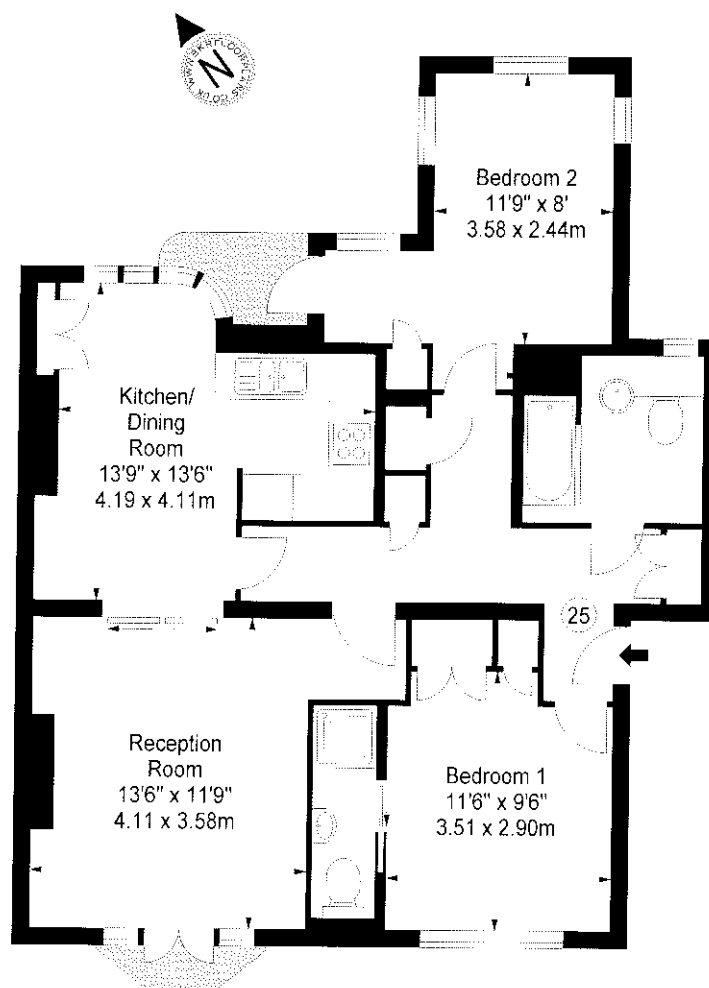


Flat 25,
Kew Bridge Court, W4
Approx. Gross Internal Area *
809 Ft² - 75.16 M²



Third Floor

Illustration For Identification Purposes Only. Not to Scale

* As Defined by RICS - Code of Measuring Practice

BKR
FLOORPLANS

(OFFICES THROUGHOUT THE UK)

T: 0845 257 2022
WWW.BKRFLOORPLANS.CO.UK
2007